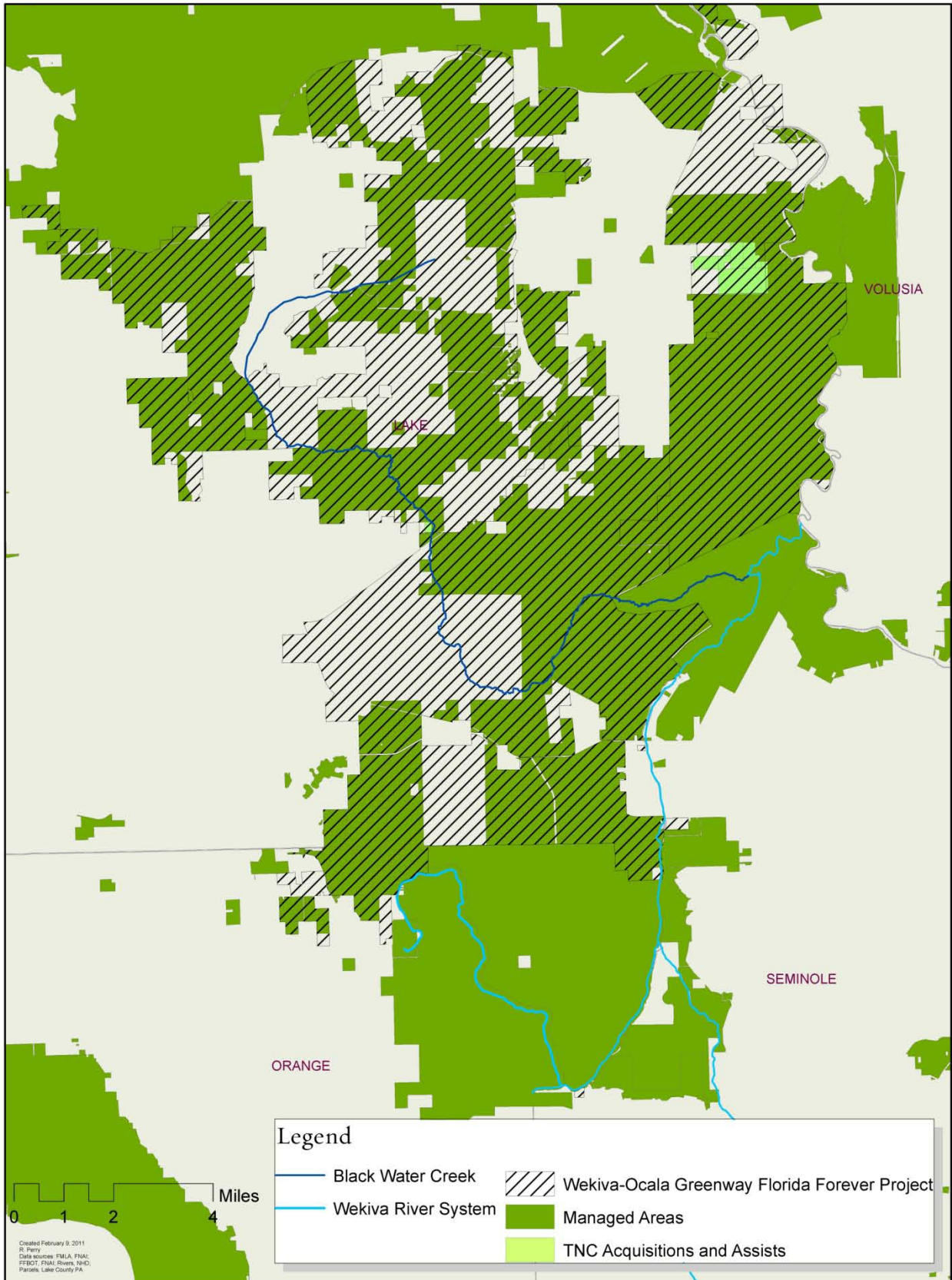




Project Proposal 1: Land Acquisition within Black Water Creek corridor of the Wekiva-Ocala Greenway

1. Description: The Wekiva-Ocala Greenway Florida Forever land acquisition project was created by the State of Florida in the 1990's to protect the natural connections between the Wekiva River Basin (including the state-owned lands of Wekiwa Springs State Park, Rock Springs Run State Reserve, the Lower Wekiva River State Reserve and Hontoon Island State Park) and the Ocala National Forest. A substantial amount of land has been acquired within the project, but several tracts remain that are essential to the viability of the entire project. The Wekiva-Ocala Greenway Florida Forever project and the Wekiva Wild and Scenic River System designation both place a high priority on the Black Water Creek watershed. (see Exhibit A) Protection of land within the Black Water Creek corridor will further the goals of both projects by connecting habitat within the wildlife movement corridor and protecting water quality and quantity values by potentially protecting springs, wetlands, surface waters and high recharge areas. The project area is depicted on Exhibit B and is a buffer area of 1500 feet around the creek. Private landowners within the Black Water Creek project area will be contacted to determine if they are willing sellers. Once willing sellers are identified, the Wekiva Wild and Scenic River System Advisory Management Committee ("AMC") will prioritize the properties for potential acquisition, and will then provide funds for appraisals in order to facilitate negotiations. The Nature Conservancy ("TNC") will manage the land acquisition process including contracting with landowners, coordinating efforts with other conservation partners to fund the purchase of the properties, and completing the transactions.
2. ORV's/Goals/Objectives (includes priority for Objective from Management Plan, H=High, M=Medium):
 - a. Wildlife/Habitat ORV, Goal 2, Objective D (M), Action i and Objective E (M), Action i
 - b. Water Quality/Quantity ORV, Goal 1, Objective A (H), Actions i through v
3. Potential lead agency/organization: The Nature Conservancy will be the lead organization.
4. Potential partnering agencies/organizations: Department of Environmental Protection, Division of Forestry and St. John's River Water Management District
5. Role for the Wild and Scenic AMC: Once willing sellers are identified, the AMC will prioritize the properties for potential acquisition, provide funding for TNC staff time and due diligence.
6. Total project budget: \$30,000
 - a. \$10,000 is requested to pay for TNC staff time for the actions mentioned above.
 - b. \$20,000 is requested to pay for appraisals and other due diligence to facilitate the transactions.
7. Current and potentially available budget:
8. Project location: See attached Exhibit B
9. Timeline: Landowner contact will begin immediately upon approval by the Committee. Updates will be provided at each meeting.
10. How your organization can support the project: In addition to those items noted in #4 above, TNC may participate in fundraising efforts for individual transactions and search and apply for other funding opportunities.

Wekiva Wild and Scenic River System Advisory Management Committee
 Land Acquisition in the Black Water Creek Corridor
 Exhibit A





Project Proposal 2: Public Service Announcements

1. Description: Produce a series of public service announcements (PSA's) for distribution in and around the Wekiva Basin to raise awareness about the Wekiva Wild and Scenic River System. PSA's could include spots on radio, television, and billboards (including electronic billboards). Subjects could include recreational access, volunteer projects and other opportunities for personal stewardship (such as decreasing water use or installation of Florida-friendly landscaping). Billboard(s) could state "Support your local Wild and Scenic River" and include the website address.
2. ORV's/Goals/Objectives (includes priority for Objective from Management Plan, H=High, M=Medium):
 - a. Public Education and Outreach, Goal 1, Objective B (H), Action i
 - b. Public Education and Outreach, Goal 2, Objective B (M), Action ii
3. Potential lead agency/organization: Wild and Scenic AMC subcommittee
4. Potential partnering agencies/organizations: Interested members of AMC
5. Role for the Wild and Scenic AMC: Support
6. Total project budget: Up to \$25,000 (airtime, production); could include free airtime as required by various stations
7. Current and potentially available budget: \$0
8. Project location: Regional
9. Timeline: 2013-2014
10. How your organization can support the project: Aid in creation of content for various PSA's
11. Ongoing or previous work in support of this project (to avoid duplication): Current signage project will begin to raise awareness, and this should help to achieve higher levels of visibility.



Project Proposal 3: Recreational Assessment: Current Use and Carrying Capacity

1. Description: Determine if current level of recreational use in the Wekiva River System is negatively affecting both human and ecological perspectives/ Estimate the potential impact of current and projected recreational use. Overuse can be expressed as too many paddlers on a given stretch of the river , seeing too much litter , having too much habitat physically damaged by users , or in over-fishing that creates an unbalanced fish population. Assess what uses are compatible with each river segment. Assessments would consist of interviews with users regarding their current experiences and concerns as well as biological surveys. Information regarding potential future access points should be gained during this study as well.
2. ORV's/Goals/Objectives (includes priority for Objective from Management Plan, H=High, M=Medium):
 - a. Recreation, Goal 1, Objective A (H), Actions i-v
 - b. Public Education and Outreach, Goal 2, Objective A (M), Action ii
3. Potential lead agency/organization: Wekiva River Ambassador
4. Potential partnering agencies/organizations: Florida Forest Service, Florida Parks Service, FDEP Aquatic Preserve, Orange County Parks and Recreation, Orange County Environmental Protection Division, Lake County, City of Apopka
5. Role for the Wild and Scenic AMC: The role of the Wild and Scenic AMC would be to oversee the progress of the project, provide input and review of the final project documents.
6. Total project budget: \$50,000
7. Current and potentially available budget: TBD
8. Project location: Wekiva Wild and Scenic River System and Wekiva Spring shed Basin
9. Timeline: Study should commence within the FY 2012/2013
10. How your organization can support the project: Organization can support by providing information needed to complete the study.
11. Ongoing or previous work in support of this project (to avoid duplication): Need to model the project after the Ichtucknee carrying capacity study. River Ambassador and aquatic preserve staff have developed a draft questionnaire for river users that can be used as a starting point.



Project Proposal 4: Wekiva Wild and Scenic River Symposium

1. Description: Hold a 2-day symposium, with invited or submitted speakers on topics pertinent to the Wekiva River System (research, management, public use, etc.). The talks would be arranged so that one day would primarily be targeted at a general audience and another day targeted at a more scientific audience. Presenters would be encouraged to speak on both days where possible. General sessions would integrate information gleaned during the presentations into potential projects for the Wild and Scenic AMC.
2. ORV's/Goals/Objectives (includes priority for Objective from Management Plan, H=High, M=Medium):
 - a. Public Education and Outreach, Goal 2, Objective E (M), Action ii
 - b. Public Education and Outreach, Goal 2, Objective B (M), Action ii
 - c. Water Quality, Goal 1, Objective F (H), Action iii
3. Potential lead agency/organization: Wekiva River Aquatic Preserve, FPS, FOWR
4. Potential partnering agencies/organizations: Colleges and Universities, FWC, environmental consulting firms
5. Role for the Wild and Scenic AMC: Invitation of Plenary speakers, review and selection of presentations, partial funding of venue
6. Total project budget: \$20,000
 - a. Venue Rental
 - b. Food
 - c. Travel for plenary speakers
7. Current and potentially available budget: A large suite of organizations, including governments, Environmental consulting firms from the region, colleges and universities, and NGO's could be potentially approached for sponsorship of the conference. Registration fees would also underwrite some portion of the expenses.
8. Project location: Conference center within the Wekiva Basin
9. Timeline:
 - a. Initial Planning – 6 months
 - b. Announcements, finding plenary speakers, selection of presenters, obtaining sponsorships – 6 months
 - c. Conference and wrap-up – 2 months
10. How your organization can support the project: Heavy participation in organizing committee.
11. Ongoing or previous work in support of this project (to avoid duplication): A conference with the focus of the Wekiva Basin has not been held recently; FOWR is anticipating a Wekiva Summit in fall 2012 that could dovetail with this project.



**Project Proposal 5: Evaluation of Wekiva River Aquatic Invertebrate Communities:
Current Status and Comparisons with a Baseline Data Set**

1. Description: a. In 1997 the Florida Fish and Wildlife Conservation Commission (FWC) evaluated invertebrate communities in the Wekiva and Little Wekiva rivers with the primary objectives of assessing the overall health of the Wekiva system and predicting the ecological effects of potential 10 to 20 percent flow reductions anticipated by 2010. Invertebrate communities were selected as the tool for this evaluation because they are a critical component in normally functioning spring and stream ecosystems and because invertebrate community structure is an excellent indicator of freshwater ecosystem integrity. During the 1997 evaluation, multiple aquatic vegetation and river bottom habitats were quantitatively sampled at 12 sites along a 16 km segment of the river system during two sampling events (June and October 1997). Results of the study were indicative of moderately healthy, flow dependent, invertebrate communities in most locations and habitats sampled. The database compiled during the evaluation was designed to serve as a baseline for future comparisons intended to identify the trajectory of invertebrate community quality and document the overall ecological health of the system through time. Nearly 15 years have passed since the initial Wekiva River invertebrate community evaluation. It is now important to implement a second evaluation to determine the status of Wekiva River invertebrate communities in the context of modifications and disturbances that have occurred in the system. Results from this re-evaluation are critical to the assessment of disturbance impacts associated with channel modification, sedimentation, and undesirable algal growths. Results of the work are also important for determining the current status of the riverine food web and nutrient cycling processes.
2. ORV's/Goals/Objectives (includes priority for Objective from Management Plan, H=High, M=Medium):
 - a. Wildlife and Habitat, Goal 1, Objective B (H), Actions i-iii
 - b. Wildlife and Habitat, Goal 1, Objective C (H), Actions iii-iv
3. Potential lead agency/organization: The lead agency for the project will be the Florida Fish and Wildlife Conservation Commission. Principal Investigator will be Gary Warren, Principal Scientist of the agency's Freshwater Invertebrate Resource Assessment Group, located in Gainesville, Florida.
4. Potential partnering agencies/organizations: Potential partnering agencies are the Florida Department of Environmental Protection and the University of Florida.
5. Role for the Wild and Scenic AMC: Results generated by the re-evaluation of Wekiva River invertebrate communities after a 15 year period will provide the Wild and Scenic AMC with an assessment of the current ecological status of the river and insight into the ecological trajectory of the river system based upon comparisons with invertebrate community data collected in 1997.
6. Total project budget: The project budget will total approximately \$120,000, including all personnel and commodities. FWC will provide approximately \$80,000 of this budget. The budget request from Wild and Scenic Rivers would total a maximum of \$40,000.
7. Current and potentially available budget: Potentially available budget from FWC is approximately \$80,000.
8. Project location: The project study area will be the Wekiva River from the area of Wekiva Springs downstream to the Route 46 bridge.
9. Timeline: The project will take approximately 18 months from startup to complete. In order to duplicate the initial evaluation conducted in 1997, two sampling events would be implemented, one in the autumn of the year and one in early summer. FWC would be prepared to begin sampling by summer 2012.

10. How your organization can support the project:

- a. Personnel: the Florida Fish and Wildlife Conservation Commission (FWC) would provide a Principal Investigator and two freshwater invertebrate biologists to the project.
- b. Equipment: FWC would provide all vehicles, boats, field, and laboratory equipment necessary to conduct sampling and field work. No field or laboratory equipment purchases would be necessary in conjunction with the project.

11. Ongoing or previous work in support of this project (to avoid duplication): The Freshwater Invertebrate Assessment Group of FWC conducted an evaluation of Wekiva River invertebrate communities in 1997. The proposed project would duplicate the 1997 work in an effort to determine the current status and ecological trajectory of the Wekiva River system.



Project Proposal 6: Painting of SR 46 Bridge

1. Description: The State Road 46 bridge over the Wekiva River will be replaced during the construction of the Wekiva Parkway. However, until that occurs (up to 10 years in the future), the bridge is an eyesore to travelers on the river. During the bridge charettes hosted by the Orlando Expressway Authority, several “photo-shopped” slides demonstrated how painting the bridge in a less intrusive color would create a more pleasing vista.
2. ORV’s/Goals/Objectives (includes priority for Objective from Management Plan, H=High, M=Medium):
 - a. Scenic, Goal 2, Objective C (H), Action i
3. Potential lead agency/organization: AMC Subcommittee
4. Potential partnering agencies/organizations: FDOT, Lake and Seminole Counties, Wekiva River Aquatic Preserve
5. Role for the Wild and Scenic AMC: Explain importance of project to FDOT
6. Total project budget: \$10,000
7. Current and potentially available budget: FDOT could potentially build this project into its budget.
8. Project location: SR 46 bridge over Wekiva River
9. Timeline:
 - a. Planning – 6 months – would require investigation of proper paints, methods to minimize paint contaminating river
 - b. Painting of bridge – 3 months
10. How your organization can support the project: Coordinate with FDOT regarding site visits, including provision of boat support if needed.
11. Ongoing or previous work in support of this project (to avoid duplication): This project is not under consideration by any other organization.
12. Additional comments: The necessity of this project is dependent upon the timeline of the Wekiva Parkway.



Project Proposal 7: Bird Survey and Data Analysis

1. Description: Birds are used as indicator species for many natural systems because not only do they integrate a large number of environmental factors, they are readily understandable by the general public. A regular survey (quarterly at a minimum to identify seasonal variations) should be conducted on all sections of the river system to better understand use of the Wekiva by avifauna as well as to identify occurring trends (positive or negative). Volunteer organizations and students/faculty from the local colleges and universities should be encouraged to participate.
2. ORV's/Goals/Objectives (includes priority for Objective from Management Plan, H=High, M=Medium):
 - a. Wildlife and Habitat, Goal 1, Objective D (M), Action ii
 - b. Outreach and Education, Goal 2, Objective B (M), Action ii
 - c. Outreach and Education, Goal 2, Objective C (M), Action iv
3. Potential lead agency/organization: The Wekiva River Aquatic Preserve currently conducts surveys on a portion of the Wild and Scenic waterways and could act as a clearinghouse and coordinator for the remaining sections. Additionally, the aquatic preserve has two motorboats that could be made available for this project and is currently responsible for the Wild and Scenic canoes and trailer.
4. Potential partnering agencies/organizations: FWC, FPS, FFS, Audubon and FOWR all have outstanding birders who would provide great benefit for the surveys. There is the potential for partnering with local liveries to provide kayaks where necessary to avoid the necessity of trailering or using personal equipment.
5. Role for the Wild and Scenic AMC: Provide funding for data analysis using a master's thesis project at a local university.
6. Total project budget: \$30,000
 - a. \$23,000 from Wild and Scenic
 - i. \$20,000 for two years master's thesis support
 - ii. \$3,000 for gas and boat repairs over 2 years associated with this work
 - b. \$7,000 in-kind (staff time and boats) from Wekiva River Aquatic Preserve
7. Current and potentially available budget: The aquatic preserve will provide boat support at operating cost (gas and repairs), providing a significant savings from rental or investment in new equipment. Considerable aquatic preserve staff time will be devoted to this project at no additional cost.
8. Project location: Wekiva River and its tributaries
9. Timeline: Quarterly surveys combined with annual data reporting. Two years' worth of data would be analyzed as part of the master's thesis to account for some seasonal and annual variability.
10. How your organization can support the project: As previously mentioned, the Wekiva River Aquatic Preserve is already committed to continuing surveys on a portion of the Wild and Scenic, and can provide accessibility by boat to the river.
11. Ongoing or previous work in support of this project (to avoid duplication): This project will examine data from previous surveys conducted by several partners that have not been rigorously analyzed.



Project Proposal 8: OSTDS Support

1. Description: The most current data from FDEP and FDOH estimates that Onsite Sewage Treatment and Disposal Systems (OSTDS, commonly known as septic systems) contribute approximately 26 percent of the nitrates in the Wekiva River. Therefore, it is likely that any substantial decrease in nitrate in the system will involve decreasing nitrates in OSTDS. Ongoing research to efficiently and effectively remove nitrates in OSTDS is being conducted by many entities. This project would:
 - a. Create an educational program to encourage private homeowners to upgrade their systems.
 - b. Support grant-writing projects to obtain large scale funding for implementation.
 - c. Utilize the most up-to-date cost-effective technologies and geospatial information to identify and improve septic systems in locations throughout the basin that would provide a rapid benefit to the springs of the Wekiva.
2. ORV's/Goals/Objectives (includes priority for Objective from Management Plan, H=High, M=Medium):
 - a. Water Quality and Quantity, Goal 1, Objective F (H), Action iii
 - b. Water Quality and Quantity, Goal 1, Objectives J-L (H), all Actions
3. Potential lead agency/organization: Wekiva River Aquatic Preserve
4. Potential partnering agencies/organizations: All partnering municipalities and counties
5. Role for the Wild and Scenic AMC: Identify potential funding sources, hire grant writing firm, assist with initial contacts with local utilities
6. Total project budget: \$50,000 from Wild and Scenic
 - a. \$20,000: Identification of high-priority areas for OSTDS improvements
 - b. \$15,000: Hiring professional firm to write 2-3 grants targeting urban OSTDS improvements
 - c. \$15,000: Educational campaign for improving septic systems (may be eligible for grant funding)
7. Current and potentially available budget: Local governmental agencies regularly commit large sums of funding to Advanced Wastewater Treatment (AWT) through retrofits, hooking up neighborhoods, and Operations and Maintenance. Some of these funds should be eligible as match towards a regionally integrated wastewater treatment plan that combines both AWT and OSTDS where each is practical and prudent.
8. Project location: High recharge areas of the Wekiva springshed
9. Timeline: This project should be coordinated with ongoing research, which should be completed in 2014. This project would have a three-year lifespan, 2014-2016.
10. How your organization can support the project: Assistance identifying potential areas for initial OSTDS improvements, liaison with Florida Geological Survey (FDEP) for further refinement of project areas.
11. Ongoing or previous work in support of this project (to avoid duplication): This project will build upon current and ongoing research examining new treatment technologies for OSTDS and work hand in hand with local utilities to ensure that capital project planning integrates this work.



Project Proposal 9: Bridge to Nowhere

1. Description: In the 1970's, a failed development resulted in a concrete bridge over the Wekiva River into what is now the Rock Springs Run State Reserve (at approximately the southernmost reach of the Wekiva River). The bridge is now an eyesore as well as a safety hazard (due to the lack of maintenance as well as being an opportunity for illegal jumping into the river). Erosion from around the structure has resulted in downstream sand deposition. Removal of the bridge and associated bank restoration is necessary to improve the scenic and wildlife/habitat values of this stretch of the Wekiva River.
2. ORV's/Goals/Objectives (includes priority for Objective from Management Plan, H=High, M=Medium):
 - a. Scenic ORV, Goal 2, Objective D (M), Actions ii and iii.
 - b. Wildlife/Habitat ORV, Goal 2, Objective F (M), Actions i and ii.
3. Potential lead agency/organization: Florida Park Service (since the bridge's north terminus sits on Rock Springs Run State Reserve)
4. Potential partnering agencies/organizations: Wekiva River Aquatic Preserve, SJRWMD, FDOT, Army Corps of Engineers, Wekiva Island
5. Role for the Wild and Scenic AMC: Fund planning and permitting section, including identification of potential restoration funds.
6. Total project budget: \$200,000
 - a. \$20,000 – Wild and Scenic funding for planning and permitting
 - b. \$180,000 - Grants or outside funding for demolition and removal
7. Current and potentially available budget: Multiple foundations and governmental agencies (primarily at the federal level) offer grant funding that would be completely appropriate for this type of project.
8. Project location: Wekiva River, adjacent to RSRSR and Wekiva Island
9. Timeline:
 - a. Permitting – 6 months
 - b. Demolition – 6 months
10. How your organization can support the project: Assist in location of grant funds and grant writing
11. Ongoing or previous work in support of this project (to avoid duplication): This is a stand-alone restoration project that has been discussed for many years. Recent progress has been obtaining unofficial estimates for the work.



Project Proposal 10: Wekiva River Basin Research and Education Center

1. Description: Provide a Freshwater Research and Education Center where residents and the general public can learn about the Wekiva River System. Relocate the Wekiva River Aquatic Preserve office to the Research and Education Center location. On site AP staff will solicit, encourage, promote and coordinate with researchers and educators on projects related to the Wekiva Wild and Scenic River System; solicit and supervise interns to assist with research and education activities. The location will also provide river access for researchers and the general public. The facility will help reduce research costs by providing overnight accommodations for short periods of time while research is conducted on the Wekiva River System. Display Aquatic Preserve/Wild and Scenic River information, library materials, maps, and other ecological information. The AP program is administered through the Office of Coastal and Aquatic Managed Areas, which also supports three National Estuarine Research Reserves (NERR). All NERR's have state of the art Research and Education facilities, expertise and willingness to share information. Additionally, many of their existing education exhibits are adaptable to freshwater systems.
2. ORV's/Goals/Objectives (includes priority for Objective from Management Plan, H=High, M=Medium):
 - a. Recreation Value Goal 1, Objective C (H), Action i
 - b. Recreation Value Goal 1, Objective D (M), Actions i and ii
 - c. Public Education and Outreach Goal 2, Objective B (M), Actions i-v.
 - d. Public Education and Outreach Goal 2, Objective C (M), Actions iii-iv.
3. Potential lead agency/organization: FDEP Aquatic Preserve
4. Potential partnering agencies/organizations: Florida Forever/FPS/TNC/WMD/FOWR
5. Role for the Wild and Scenic AMC: Support; funding
6. Total project budget: \$2.5 million
7. Current and potentially available budget: \$0
8. Project location: Wekiva Park Drive /Wekiva River at Wekiva River Haven
9. Timeline: 2014-2015
10. How your organization can support the project: Research land acquisition costs; PR with landowner
11. Ongoing or previous work in support of this project (to avoid duplication): There is currently no freshwater Research and Education Facility in the Wekiva Basin.



Project Proposal 11: Picnic Platforms on the Wekiva River

1. Description: Provide two or three platform where canoers can get out of their boat, stretch, have lunch or potentially camp overnight. Provide a day use area that could be used as an alternative to nearby Shell Island, an important archaeological site that has significant degradation because of overuse. Shell Island is conveniently located approximately 45 minutes from the canoe rental.
2. ORV's/Goals/Objectives addressed:
 - a. Recreation Goal 1, Obj B (H), Action iv
 - b. Historic and Cultural Goal 1, Obj. L (M), Actions i-ii
 - c. Historic and Cultural Goal 2, Obj. E (M), Actions i-iv
3. Potential lead agency/organization: FDEP Wekiva River Aquatic Preserve
4. Potential partnering agencies/organizations: Rollins College
5. Role for the Wild and Scenic AMC: Support; funding
6. Total project budget: \$10,000
7. Current and potentially available budget: \$1,100 (Rollins College Shell Island Protection Fund). Rollins could potentially provide additional funding.
8. Project location: upstream of Shell Island/Wekiva River
9. Timeline: 2013-2014
10. How your organization can support the project: Project Management; coordination with Rollins College
11. Ongoing or previous work in support of this project (to avoid duplication): AP program initiated the Shell Island protection Campaign in partnership with Rollins College. Rollins donated \$1,500 to fund equipment to remove rope swings from the island.



Project Proposal 12: Economic Impact of the Wekiva River System

1. Description: The various tributaries of the Wekiva Wild and Scenic River System support numerous local businesses including restaurants, bars, camp grounds, tubing outfitters, convenience stores, gas stations, camping supply stores – to name a few. While information is available on the economic value of state parks, a more detailed evaluation of the river’s economic value is not known. Determine the economic value of various segments of the Wekiva River System.
2. ORV’s/Goals/Objectives (includes priority for Objective from Management Plan, H=High, M=Medium):
 - a. Recreation Goal 1, Obj. A (H), Action i
 - b. Recreation Goal 2, Obj. B (H), Actions i-iv
 - c. Public Education and Outreach Goal 1, Obj. B (H), Action i
 - d. Public Education and Outreach Goal 2, Obj. A (M), Action ii
3. Potential lead agency/organization: FDEP Wekiva River Aquatic Preserve
4. Potential partnering agencies/organizations: FPS/FOWR
5. Role for the Wild and Scenic AMC: Support; funding
6. Total project budget: \$20,000 - \$40,000
7. Current and potentially available budget: \$0
8. Project location: Wekiva River System
9. Timeline: 2013-2014
10. How your organization can support the project: Background research; Project Management/contract oversight
11. Ongoing or previous work in support of this project (to avoid duplication): Economic studies exist for state parks, but none exist for the various Wekiva River tributaries.



Project Proposal 13: Wekiva Loop Trail

1. Description: Various recreation biking/hiking/walking trail segments are either in place or in the planning stages for locations throughout the Wekiva Basin. A coordinated effort between all entities can result in promoting and marketing a “Wekiva Loop Trail” that circumnavigates the Wekiva Basin for approximately 60 miles. The loop trail would traverse from existing trail heads along Markham Woods Road west to Lake County, south through the periphery of the Neighborhood Lakes area and further south to Apopka, then east to the existing trail head along State Road 436 in Altamonte Springs which traverses 15 miles north to connect to the existing Markham Woods Road trailhead. Numerous education opportunities are presented along the trail at trail heads and rest stops benches for interpretive kiosks/posters to education trail users about the springshed, wetlands, wildlife, and value of the Wekiva Basin Ecosystem. The Wekiva Seminole trail is utilized by thousands of people on a daily basis.
2. ORV's/Goals/Objectives (includes priority for Objective from Management Plan, H=High, M=Medium):
 - a. Recreation Goal 1, Obj. B (H), Actions ii, iv
 - b. Public Education and Outreach Goal 2, Obj. A (M), Action ii
3. Potential lead agency/organization: FDEP Wekiva River Aquatic Preserve
4. Potential partnering agencies/organizations: FPS/WMD/TNC
5. Role for the Wild and Scenic AMC: Support; funding
6. Total project budget: \$5,000 (5-6 fiberglass embedded interpretive signs @ \$600-800 each, \$500 for graphics design)
7. Current and potentially available budget: \$500/DEP AP potentially available
8. Project location: Various location along the Wekiva trails in Orange, Lake and Seminole Counties.
9. Timeline: 2013-2014 (or as Wekiva Basin trails are completed)
10. How your organization can support the project: Provide interpretive text/photos for displays; Project Management
11. Ongoing or previous work in support of this project (to avoid duplication): None



Project Proposal 14: Board walk to the Wekiva River

1. Title: Board walk to the Wekiva River
2. Description: Construct a boardwalk along a fire break within the Seminole State Forest adjacent to hiker's camp over the floodplain to the river (4ft wide by 500 ft). This project will provide a western access to the Wekiva River from within Seminole State Forest.
3. ORV's/Goals/Objectives (includes priority for Objective from Management Plan, H=High, M=Medium):
 - a. Recreation Goal 1
 - b. Public Education and Outreach Goal 1, Obj. A (H), Action iv
4. Potential lead agency/organization: Florida Forest Service
5. Potential partnering agencies/organizations: FDEP
6. Role for the Wild and Scenic AMC: Provide funding and support volunteer assistance
7. Total project budget: \$25,000
8. Current and potentially available budget: Current \$0, Potential \$3,000
9. Project location: Seminole State Forest, east of Shelter Camp
 - a. Lat N28 49' 27.4" Lon W81 25' 6.1"



Project Proposal 15: Interpretive signage on Blackwater Creek

1. Description: Providing interpretive signage along a canoe trail on Blackwater Creek. This canoe trail is currently in the planning stages and has the potential to be a regional blueway trail which could attract forest visitors from outside of central Florida.
2. ORV's/Goals/Objectives (includes priority for Objective from Management Plan, H=High, M=Medium):
 - a. Recreation Goal 2
 - b. ii. Public Education Goal 2, Obj. C (M)
3. Potential lead agency/organization: Florida Forest Service
4. Potential partnering agencies/organizations: FDEP
5. Role for the Wild and Scenic AMC: Provide funding and support volunteer assistance
6. Total project budget: To be determined – rough estimate is \$3,000
7. Current and potentially available budget: Current \$0, Potential \$1,000
8. Project location: Seminole State Forest
 - a. Lat 28 51' 27" Lon 81 26' 13"



Project Proposal 16: Removal of Nonnative Vegetation near the Wekiva River

1. Description: Removal of nonnative vegetation (to include air potato & cogon grass) located in large pockets near the Wekiva River and the removal of hyacinths and water lettuce from Blackwater Creek. This would be a cooperative effort with DEP biologists from Wekiva Springs State Park and Lower Wekiva River State Preserve.
2. ORV's/Goals/Objectives (includes priority for Objective from Management Plan, H=High, M=Medium):
 - a. Wildlife and Habitat Goal 3, Obj. A (H), actions i-v
3. Potential lead agency/organization: Florida Forest Service
4. Potential partnering agencies/organizations: DEP, FWC
5. Role for the Wild and Scenic AMC: Provide funding
6. Total project budget: \$2,500 annually
7. Current and potentially available budget: Current \$0, Potential \$500 annually
8. Project location: Seminole State Forest, Lower Wekiva River Preserve State Park



Project Proposal 17: Hiker Camp Improvements

1. Description: Improve amenities at the Primitive Hikers Camp located on Blackwater Creek, just south of the Sand Road Bridge. This camp site is frequently visited by day use hikers and will provide good interpretive opportunities.
2. ORV's/Goals/Objectives (includes priority for Objective from Management Plan, H=High, M=Medium):
 - a. Recreation Goal 1, Obj. B (H), action iv
3. Potential lead agency/organization: Florida Forest Service
4. Potential partnering agencies/organizations: Florida Trail Association
5. Role for the Wild and Scenic AMC: Advise on interpretive items and amenity improvements
6. Total project budget: \$2,000
7. Current and potentially available budget: \$2,000
8. Project location: Seminole State Forest, Blackwater Camp,
 - a. Lat N28 51' 26.4" Lon W81 26' 7.2"



Project Proposal 18: Installation of Camera Traps to Monitor Bear Movement, Behavior Patterns, Population and Density

1. Description: In response to the above objective and the action outlined in this Management Plan, this proposal will provide three-fold results. This proposal entails the installation of approximately 18 (+ replacements) trail cameras in suburban Wekiva River Basin perimeter areas and in more remote natural habitat areas (to provide contrasting results) to monitor the movement and behavior patterns of the black bears inhabiting the Basin. In addition, the statistical data would be used to gauge both bear population and bear density in order to determine if there are any behavior modifications in bear home ranges and how this affects the number of bear nuisance calls. Bear nuisance calls are used as a leading indicator of bear population. Any behavior modifications recorded will also affect the BMA population projections that are based on traditional home range patterns that are “extrapolated and projected into population estimates.” This study would help compare traditional and modified home range patterns and the effects of the bear population that may have permanently migrated to the perimeter of this habitat in order to locate easily accessible food sources therefore giving a more comprehensive population overview.
2. ORV’s/Goals/Objectives (includes priority for Objective from Management Plan, H=High, M=Medium):
 - a. Wildlife and Habitat Goal 2, Objective A (H), Action iv
3. Potential lead agency/organization: Friends of the Wekiva River
4. Potential partnering agencies/organizations: UCF, FWC, Florida State Parks, Florida Forestry Service
5. Role for the Wild and Scenic AMC: Provide support for and approval of proposal
6. Total project budget: \$6,856.00 – see attached
7. Current and potentially available budget: \$0.00
8. Project location: Wekiva Springs State Park, Rock Springs Run State Management Area, Seminole State Forest
9. Timeline: June through December 2012
10. How your organization can support the project: FOWR Board Members will deploy cameras, retrieve data, and forward results to partnering agency
11. Ongoing or previous work in support of this project (to avoid duplication): NA
12. Additional comments:

Material List	Manufacturer	Product Description	Quantity	Cost Each	Total Cost
1) Cameras	Bushnell 8MP Trophy Cam Brown	119436C	22	\$202.00	\$4,444.00
2) Camera Security Box	Lock Box for Bushnell Trophy Cam		22		Included
3) Camera Box Locking Cable	Master Lock Adjustable	84118KADCAM-TMB	22		Included
4) Memory Cards	SanDisk 16GB	SDSDB-016G-B35	44	\$17.00	\$748.00
5) Batteries	NiMh Batteries	(8-Pack, 2000 mAh)	44	\$19.00	\$836.00
6) Battery Chargers	Hitech	iC-808UL-LCD 8 Bank	2	\$30.00	\$60.00
7) GPS	Garmin	eTrex H Handheld GPS	2	\$84.00	\$168.00
8) Miscellaneous					\$600.00
TOTAL COST					\$6,856.00



Project Proposal 19: Wekiva Basin Bioblitz

1. Description (see attached pages for full version):
 - a. THE IDEA. Organize the natural history talents of scientists and naturalists in the area to document biological diversity in the Wekiva Basin. Celebrate and publicize the event and the results in a way that instills passion for conservation in the citizens of central Florida.
 - b. GOALS
 - i. Document the Basin's biological diversity ranging from coastal plants, to aquatic and terrestrial invertebrates, migrating birds and black bears
 - ii. Provide scientists, students, and the general public and outdoorsmen to conduct fieldwork together
 - iii. Add to the parks' official species list
 - iv. Highlight the importance of protecting the diversity of the Wekiva Basin
 - v. Celebrate the unique and diverse array of biological organisms that live in the Basin
 - vi. Get people engaged during the bioblitz and afterward to communicate the importance of natural resource protection long-term
 - c. THE PROCESS. Count as many species from as many taxonomic groups as possible in a compressed time period. Survey a representative portion of state-owned lands in the Basin, and document unique species in representative environmental settings across these 75,000 acres.
2. ORV's/Goals/Objectives (check prior to objectives from Management Plan, H=High, M=Medium):
 - a. Wildlife and Habitat Goals Objective 1-F (H-M)
 - b. Wildlife and Habitat Goal 3 Objectives 1-C (H-M)
 - c. Public Outreach Goal Objective 1 (M)
3. Potential lead agency/organization: Friends of the Wekiva River (FOWR)
4. Potential partnering agency/organizations: numerous participating individuals representing agencies such as: the Florida Fish and Wildlife Conservation Commission, FDEP, Seminole State Forest, Seminole County, UCF, Rollins College, Seminole State College and private corporations
5. Role for the Wild and Scenic AMC: the Bioblitz will provide a snapshot of the diversity of life in the Wekiva Basin, highlight the unique and disparate forms of life and serve as an instrument for representatives of the AMC to promote the importance of conservation in central Florida
6. Total project budget: \$9830 requested from the W&S; hundreds of hours of volunteer time from the FOWR and dozens of volunteers from state government, colleges and universities and private corporations
 - a. Survey: April 13 -15
 - i. Lodging/food for regional taxonomic experts for dry-run in March - \$750
 - ii. Food/refreshments for field teams - \$2000
 - iii. Base camp at the Hammock House April 13 and 14 - \$600
 - iv. Printing maps, checklists - \$200
 - b. Bioblitz Celebration: April 21
 - i. Create thematic graphics for the Bioblitz - \$600
 - ii. Print brochures/signage - \$1500
 - iii. Rental equipment:

1. Event tent - \$1000
 2. Portable Toilets - \$450
 3. Tables and Chairs - \$130
 4. A/V support \$500
 5. Security - \$400
 - c. Contingency - \$1700
7. Current and potentially available budget: The FOWR is prepared to scale back, fund, and seek other donations to accomplish the Bioblitz
 8. Project location: Rock Springs Run State Reserve, Wekiwa Springs State Park, and Seminole State Forest
 9. Timeline: April 13 – 15 for the concentrated survey; the week of April 16th for continued surveys and species identification; April 21st for the tally and public celebration
 10. How your organization can support the project: The FOWR is leading the effort organizing the event, and staffing the bioblitz/celebration
 11. Ongoing or previous work in support of this project (to avoid duplication): The FOWR is currently gathering the expertise to conduct the bioblitz, and have species experts committed to participating who will survey plants, invertebrates, reptiles, amphibians, birds and mammals.

2012 WEKIVA BASIN BIOBLITZ

THE IDEA. Organize the natural history talents of scientists and naturalists to help document biological diversity in the Wekiva Basin. Celebrate and publicize the event and the results in a way that instills passion for conservation in the citizens of central Florida.

GOALS

- Document the Basin's biological diversity ranging from bryophytes, to aquatic and terrestrial invertebrates, migrating birds and black bears
- Provide scientists, students, and the general public an opportunity to conduct fieldwork together
- Add to the parks' official species lists
- Highlight the importance of protecting the biodiversity of the Wekiva Basin
- Celebrate the unique and eclectic array of biological organisms that live in the Basin
- Get people engaged during the bioblitz and energized to communicate the importance of natural resource protection long-term

THE PROCESS. Count as many species from as many taxonomic groups as possible in a compressed time period. Survey a representative portion of state-owned lands in the Basin, and document unique species in representative ecological communities across these 75,000 acres.

WHAT WE HOPE TO ACCOMPLISH

- *Have Fun.* The child naturalist within knows that crawling around in the woods and fields looking at plants and animals is about as good as it gets.
- *Bring out the Specialists.* A blitz of field work, especially one surrounded by colleagues and other naturalists, is about the only way that a local area can get good taxonomic information for some groups of species.
- *Identify Rare and Unique Species/Groups.* By bringing together scientists in the field, their insights can be used to identify uncommon or special habitats for protection and management. In some cases rare species may be uncovered.
- *Document Species Occurrence.* The lists of species generated, while incomplete, are an excellent starting point for inventories.
- *Get Media Attention.* Hopefully the media will be enchanted by the notion of an eclectic stew of colorful mycologists, ornithologists, lichenologists, bacteriologists, herpetologists, ichthyologists, entomologists, mammalogists and botanists.

- *Create Natural History Synergy.* Naturalists are often isolated within larger agencies or departments. Getting out into the field with folks from other fields leads to new insights, presents possibilities for cross-fertilization and increases future collaboration.
- *Begin Park/Scientist Bridge Building.* Enhancing communication between scientists and park managers can develop the opportunity for focused research and sustained data collection.
- *Estimate Species Richness.* By spending time in all of the ecological communities represented in the Basin, we expect to provide a snapshot of the diversity of life that ranges from scrub ridges to the floodplain forests and springs of the Wekiva Basin.

WHAT WE ARE NOT TRYING TO ACHIEVE

- *A Complete Inventory.* A weeklong event cannot come near to documenting all the species present within 75,000 acres of publically-owned lands. The species pool changes throughout the year, so no matter what day is chosen, species will be missed.
- *A Basis for Monitoring.* Repeating a bioblitz on the same day each year should not be thought of as a means of tracking change over time. The loose nature of participants, the vagaries of species detection, weather, observer skill, and many other factors all conspire to limit the usefulness of among-year comparisons. However, repeated blitzes will add to the accumulated species inventory and are a good means for identifying groups that would benefit from a more formal monitoring program.

SCHEDULE

The bioblitz will begin at dawn on Saturday, April 14 at three locations in the Wekiva Basin - Wekiva Springs State Park, Rock Springs Run State Reserve, and Seminole State Forest. There will be base camps at each location. Scientists, citizen naturalists and students will gather in teams of five to ten at each of these three locations and begin to document all the unique species of life that can be observed or detected. Photographers from the Orlando Camera Club will also convene at each site, and document the process and the people participating. The bioblitz will continue until 3:00 PM on Sunday April 15th. At that time, Site Leaders will compile information from all Biological Team Leaders, and highlight the initial results. Biological Team Leaders may choose to continue to collect data during the week of April 16th, so long as the results of these additional surveys are completely reported to the Site Leaders in time for presentation of the results on April 21st.

FORMAT

The three Site Leaders will coordinate with the Biological Team Leaders to assure maximum coverage of distinct ecosystems within each study area. Maps of the three study sites will be provided to each of the Biological Team Leaders, and they will be responsible for determining how to approach the surveys of their particular focal species in their study areas. Site Leaders will work with Biological Team Leaders during the week of April 16th to organize the results of the blitz, and to attempt to verify the classification of as many species as possible. Final results will be presented by Site, and for the Basin as a whole. Rare or unique species will be identified so that they can be highlighted during the tally, in publications, and in presentations to the media.

Gary Warren and the aquatic invertebrate team will operate somewhat independently, and cover the major aquatic systems in the basin: Rock Springs, Wekiwa Springs, Rock Springs Run, Wekiva River and Blackwater Creek. His team will continue to survey these systems during the week of April 16th.

THE TALLY

On Saturday April 21st, we will celebrate the biological diversity of the basin and “publish” the results of the bioblitz. The results will be listed in taxonomic order, unique species will be highlighted and photographs of the event will be presented. The Friends of the Wekiva River will host a 30-year celebration immediately thereafter. This function will include presentations from Bioblitz participants, a barbecue, guided canoe trips on the Wekiva River and guided hikes into the Lower Wekiva River State Preserve.



Project Proposal 20: Wild and Scenic Wekiva River Blueway/Paddling Trail

1. Description: A comprehensive sturdy and water resistant brochure blueway trail map which provides river users with complete information necessary to have an informed, safe, fun and educational experience on the river. Additionally, this project will have a mobile component using current hand-held technology and existing GPS/smartphone enabled programs (for geocaching or other outdoor activities). It will include river access points, camping locations, mileage/GPS information, volunteer opportunities, local canoe liveries, interpretation, etc. This project will encompass the two additional water trail proposals submitted: Blackwater Creek Paddling Trail and the Wekiva River Paddling Trail.
2. ORV's/Goals/Objectives addressed:
 - a. Recreation Goal 1
 - b. Recreation Goal 2, Objective B (H), Actions i-v
 - c. Public Education and Outreach Goal 1, Objective B (H), Actions i-ii
 - d. Public Education and Outreach Goal 2, Objective A (M), Actions i-vi
3. Potential lead agency (ies)/organization (s): NPS, FDEP (Wekiwa Springs State Park) (Wekiva River Aquatic Preserve), and Seminole State Forest.
4. Potential partnering agencies/organizations: Lake County, Seminole and Orange Counties, Private Canoe Liveries, State Park Concession, and Cities.
5. Role for the Wild and Scenic AMC: Assist with review, edits of graphic design content and text and photographs, Gather information pertinent to guide, write interpretive text. This will involve a working subcommittee for this effort.
6. Total project budget: \$15,000 (design and printing costs) (quantity: 7,000)
7. Current and potentially available budget: \$0
8. Project location: Can be distributed by state park, state forest, aquatic preserve office, private liveries, etc. and on the web
9. Timeline: Gather information, Procure Funding, Review of prototype by partners, Editing, Production. 3-6 months.
10. How your organization can support the project: Project coordination, oversight
11. Ongoing or previous work in support of this project (to avoid duplication): Some information is readily available. There are numerous blueway and paddling trail programs across the state that can be emulated. Lake County has such a program. A clearinghouse of well designed brochures is available. Additionally, Wekiwa Springs State Park has developed a prototype brochure for this project.



Project Proposal 21: Wekiva River Information Kiosk

1. Description: A kiosk for displaying educational/informational materials, maps, announcements, information related to the Outstandingly Remarkable Values, and other information (i.e., all things Wekiva) regarding the Wekiva Wild and Scenic River, at Wilson's Landing in Seminole County. Kiosk can serve as a model for other agencies to locate at access points to the River and/or other appropriate venues throughout the watershed (sample kiosk is shown below).
2. ORV's/Goals/Objectives (includes priority for Objective from Management Plan, H=High, M=Medium):
 - a. Public Outreach and Education Goal 1, Objective B (H), Action i
 - b. Public Outreach and Education Goal 2, Objective A (M), Actions i-v
3. Potential lead agency/organization: Seminole County
4. Potential partnering agencies/organizations: National Park Service, SJRWMD, FDEP, Florida Park Service, FFWCC, Wekiva Springs State Park, Wekiva River Aquatic Preserve.
5. Role for the Wild and Scenic AMC: Approve design and content of display.
6. Total project budget: \$1,000 estimate
7. Current and potentially available budget: TBD
8. Project location: Wilson's Landing, Seminole County, Florida.
9. Timeline: 6-months.
10. How your organization can support the project: Seminole County will create sign copy and produce signage in house.
11. Ongoing or previous work in support of this project (to avoid duplication): Seminole County is involved in some level of information/education sharing regarding the Wekiva River.





Project Proposal 22: Homeowner Landscaping Practices Education Program

1. Description: Develop a Homeowner Landscaping Practices education program for the Wekiva River Basin including a community survey to follow up on the implementation of the Orange County and State of Florida Fertilizer Ordinance. In addition, Lake and Seminole County could conduct a baseline survey of their residents. Educational portion of the project could include venues such as bill boards, Public Service spots on Orange, Seminole and Lake County TV stations as well as spots in local movie theatres, brochures and website and social media.
2. ORV's/Goals/Objectives (includes priority for Objective from Management Plan, H=High, M=Medium):
 - a. Public Education and Outreach Goal 2, Objective B (M), Action i
 - b. Water Quality and Quantity Goal 1, Objective G (H), Action ii
 - c. Water Quality and Quantity Goal 1, Objective N (H), Action ix
3. Potential lead agency/organization: Orange County.
4. Potential partnering agencies/organizations: SJRWMD, Seminole and Lake County.
5. Role for the Wild and Scenic AMC: Oversight.
6. Total project budget: \$50,000.
7. Current and potentially available budget: Orange County is currently monitoring the St. Johns River Water Management District (SJRWMD) wells that were placed in Orange County to determine if the Orange County Fertilizer Ordinance has had a positive impact on homeowner landscaping practices in the basin.
8. Project location: Orange , Seminole, Lake within the Wekiva Springshed Basin.
9. Timeline: Educational program and baseline and follow-up survey could commence in FY 2012/2013.
10. How your organization can support the project: Development of brochure text, public service spots and survey language. Conduct follow-up survey within Orange County.
11. Ongoing or previous work in support of this project (to avoid duplication): This project would follow the work that the SJRWMD had done in 2007 to help develop the TMDL source loading to the Wekiva River Basin that identified fertilizer as a major source of Nitrogen. This new request would continue that effort of educating citizens on the benefits of proper fertilizer use.



Project Proposal 23:

Exotic Vegetation Removal, Little Wekiva River - *Hygrophila* and *Hydrilla*

1. Description: A Volunteer Coordinator will organize and supervise groups that will manually remove the invasive exotic plants *Hygrophila* and *Hydrilla* from the Little Wekiva River during one-day events. From one to three removal events could occur during any one month. There is currently no approved herbicide for removing *Hygrophila* from flowing waters. *Hygrophila* has recently expanded to the Wekiva River and poses a serious threat. *Hygrophila* displaces beneficial native vegetation, reduces natural habitat, and forms dense mats that impede or totally block navigation. If left unchecked, the continued expansion of *Hygrophila* will likely impact the Scenic ORV and Wildlife and Habitat ORVs of the Wekiva River. Aquatic preserve staff have been successful removing *Hygrophila* and *Hydrilla* from the Little Wekiva River with volunteers, but the planning and execution process is extremely time consuming. Planning and preparation for a removal event typically takes between four and six hours. The removal event typically takes between 8 and 10 hours, including proper disposal, post event report writing and photographic documentation. A Volunteer Coordinator would increase the number of removal events, increase the amount of exotic vegetation removed, and decrease the threat to the Wekiva River from these exotic plants. Removal events can only take place April through October when the water is relatively warm. Eelgrass, a beneficial native species, also present in the Little Wekiva River, can expand after *Hygrophila* and *Hydrilla* have been removed.
2. ORV's/Goals/Objectives (includes priority for Objective from Management Plan, H=High, M=Medium):
 - a. Wildlife and Habitat Goal 3, Obj. A (H), actions i-v
 - b. Water Quality and Water Quantity Goal 1, Obj. D (M), action i
3. Potential lead agency/organization: FDEP/Wekiva River Aquatic Preserve
4. Potential partnering agencies/organizations: FOWR; SERV; Keep Seminole Beautiful; FPS/Americorps
5. Role for the Wild and Scenic AMC: Provide financial support for a Volunteer Coordinator
6. Total project budget: \$20,000 (\$16/hr/40 hrs/month/70 weeks=\$17,200; expense \$2,800)
7. Current and potentially available budget: \$1000 for equipment
8. Project location: Approximately 4 miles along the lower reach of the Little Wekiva River and the Wekiva River at its confluence with the Little Wekiva River.
9. Timeline: March 2013 to October 2014
10. How your organization can support the project: Use of aquatic preserve boats, W&S canoes; provide existing equipment (hand nets, seine nets; vehicle and trailer); in-kind supervision and support by aquatic preserve staff. The aquatic preserve has completed two successful *Hygrophila* removal events using volunteers. We will provide our planning expertise, equipment and supervision to ensure future success.
11. Ongoing or previous work in support of this project (to avoid duplication): There are no other entities working to remove *Hygrophila* from the Little Wekiva River. Two successful removal events (Eagle Scout projects) were overseen by aquatic preserve staff. Aquatic preserve staff and the River Ambassador have also manually removed *Hygrophila* from the Wekiva River just below the confluence with the Little Wekiva River. Continued monitoring for expansion into the Wekiva River is ongoing and plants are manually removed when observed.
12. Additional comments: The Wekiva River Aquatic Preserve maintains a permit from the Florida Fish and Wildlife Conservation Commission Office of Invasive Species Management to manually remove *Hygrophila* and *Hydrilla* from the Wekiva River System. The Volunteer Coordinator position will be an FDEP contract Other Personal Service (OPS) position supported and supervised by the Wekiva River Aquatic Preserve Manager.



Figure 1. Occurrence of *Hygrophila* on lower Little Wekiva River and Wekiva River, documented by Wekiva River Aquatic Preserve and FWC staff, October 26, 2011.



Project Proposal 24:

Nature Center Pavilion - Wekiva Wilderness Trust Citizen Support Organization

1. **Description:** The Wekiva Wilderness Trust (WWT) needs to relocate its existing Nature Center and is currently seeking donations for construction of a new Nature Center at Wekiwa Springs State Park. The pavilion will have more than 750 sq. ft. of display and exhibit space, including live animals and the WWT will prominently feature exhibits and displays that promote the Outstanding Remarkable Values of the Wekiva Wild and Scenic River System. The center provides education information about the history, geology, flora and fauna of the park. The new Nature Center will provide education opportunities for self-guided exhibit tours as well as a regular interpretive program by volunteers. The advantage of the new facility is that it is being designed in such a way that it can be open all the hours the park remains open as the displays and exhibits will be protected behind Plexiglas so do not need to be continuously manned. Each year, the park hosts visits from scores of school groups from Orange, Seminole and Lake Counties. The extensive porch will provide an ideal sheltered location for school class visits to learn more about the park and the importance of the springs, river and watershed. WWT volunteers also regularly do outreach programs, visiting schools and organizations to talk about the park, the environment and the importance of protecting it.
2. **ORV's/Goals/Objectives addressed:** Public Education and Outreach, Goal 2: Objective A, Actions i, ii, iii, iv, v, vii, and viii, Public Education and Outreach, Goal 2: Objective B, Actions i, ii and vi. Public Education and Outreach, Goal 2: Objective C, Actions ii, iii and iv. Public Education and Outreach, Goal 2: Objective D, Actions i and ii.
3. **Potential lead agency/organization:** Wekiva Wilderness Trust Citizen Support Organization
4. **Potential partnering agencies/organizations:** Florida Park Service/Wekiva Spring State Park; Friends of the Wekiva River; Wekiva River Aquatic Preserve/Wekiva Wild and Scenic River Ambassador Program, Florida Audubon, Florida Trails Association
5. **Role for the Wild and Scenic AMC:** Financial support
6. **Total project budget:** \$100,000: Cost of building DEP-approved pavilion \$60K, build out, exhibits and displays with Audio-Video \$40K.
7. **Current and potentially available budget:** WWT has already earmarked \$25K for this project and is planning a number of fund-raising events over the next few months to raise more funds. A number of local contractors have already indicated their willingness to provide construction assistance. WWT is also launching a major fund-raising and marketing campaign to attract donors and sponsors. An AV presentation is being prepared to be shown to targeted organizations at their monthly meetings i.e. Rotary and similar groups. The campaign also includes open houses, mail-outs, advertising in local media, placing stories in local media outlets (written and electronic) and WWT members who will personally call on prospective donor organizations and companies in the area.
8. **Project location:** Wekiwa Spring State Park
9. **Timeline:** The project is awaiting DEP final approval in Tallahassee and a favorable decision is expected within the next four weeks. The plans will then be submitted to Orange County Planning for approval. WWT has already met with the planning department and they raised no objection to the design or location. Once planning approval is granted, the structure can be completed within two months.
10. **How your organization can support the project:** Financially. WWT currently coordinates volunteer staffing and educational activities in the existing Nature Center at WSSP and will continue to do so. Volunteers will still man

the center when available to add value to the visitor's experience by being able to answer questions and display the animals outside of their enclosures.

11. Ongoing or previous work in support of this project (to avoid duplication): Coordination, support and approval from FPS.
12. Additional comments: Over 33,000 visitors per year from 76 countries tour the existing Nature Center with the expectation of this growing to over 150,000 visitors in the new center – due to extended hours. The center provides education information about the history, geology, flora and fauna of the park. The new Nature Center will provide education opportunities for self-guided exhibit tours as well as a regular interpretive program by volunteers.